



VODA IS VANCOUVER

Voda is a 16-storey residential tower where The Creek—a park side and waterfront community being built to LEED Gold standards—makes its debut. From its landscaped courtyard, to its generous balconies and terraces, to the stylish homes beyond, this is the Vancouver you're proud to call home.

Homes look out to views of the water, city and mountains. Contemporary architecture incorporates welcoming light boxes and industrial design elements in a subtle nod to the neighbourhood's past. Residents join car share networks, there's plenty of parking for bikes and electric vehicles and gardeners grow vegetables in rooftop plots.

Voda is a story that could only happen in Vancouver.



OUR CITY OF GLASS

Generous use of glass reflects the beauty of the surrounding water and sky. Glowing light boxes and a glass staircase make a rich contrast to the courtyard pond and heavy timber plaza. The mezzanine is illuminated with a canopy of romantic lights and leads to a gracious, double-height lobby.





F A L S E C R E E K



SWITCHMEN ST

QUEBEC ST

PULLMAN PORTER ST

EAST 1ST AVE

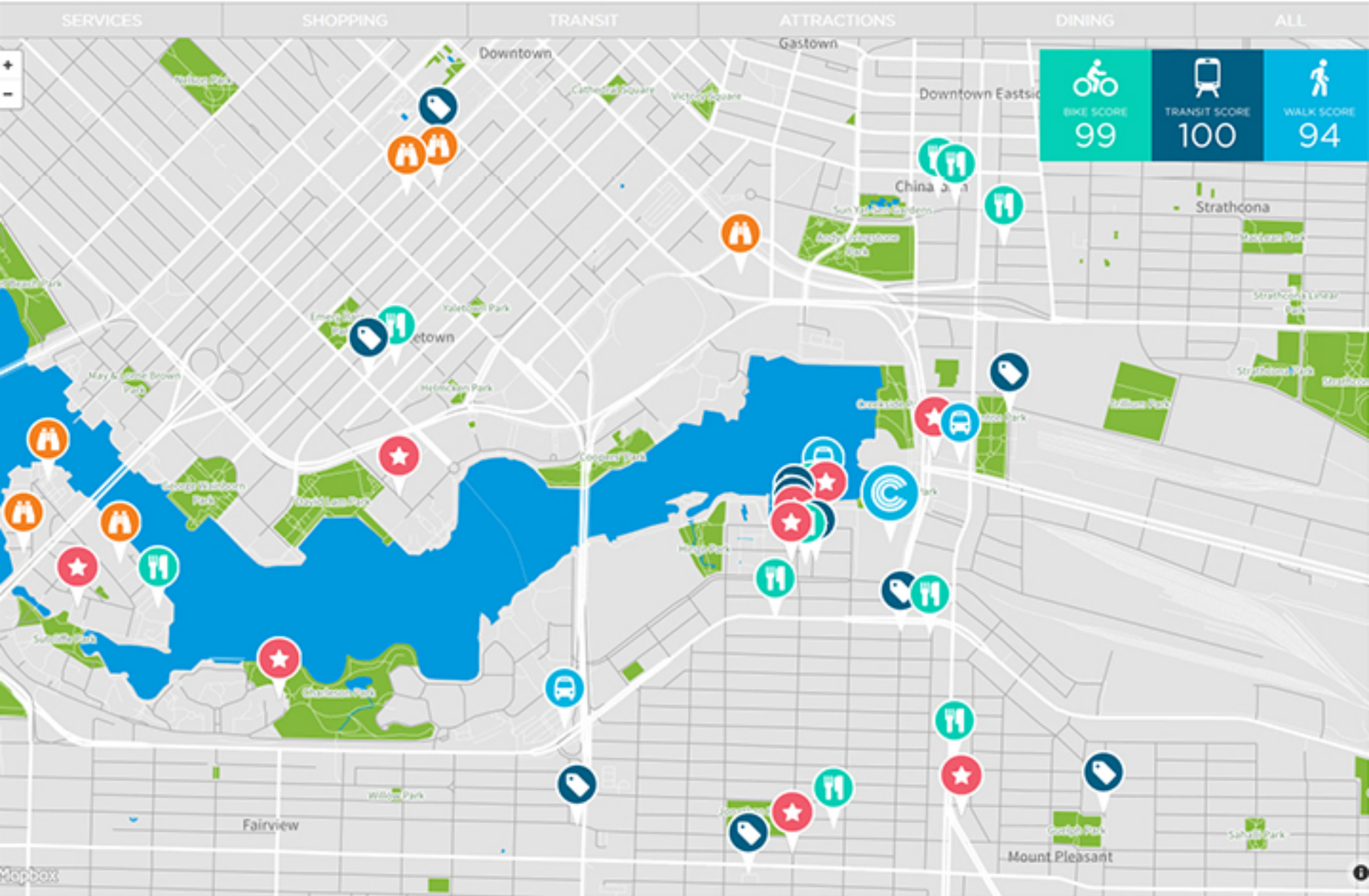


COME HOME TO THE CREEK: QUINTESSENTIAL VANCOUVER

Southeast False Creek is a neighbourhood celebrated around the world for its waterfront beauty and active lifestyle. Connected by the seawall to Yaletown and Granville Island, it's also an easy walk from the noodle bars of Chinatown, the gastropubs of Gastown and the boutiques of Main Street.

Passenger ferries sail back and forth. A network of cycle paths takes you all over the city—and the grocers, liquor stores and restaurants of Olympic Village are right next door.


DISCOVER YOUR NEIGHBOURHOOD



THE VANCOUVER LOOK

Designed for the way we live in Vancouver: fresh, natural, modern and uncomplicated. This is Voda.

Your kitchen is focal point, setting the stage for casual dinners or formal gatherings with generous counterspace and separate pantries. The timeless white design is made modern and memorable by rich wood accents while integrated appliances keep the look clean and uncluttered. Glass-enclosed showers are oversized, closets are roomy and the range of thoughtfully designed floorplans offers something to suit every lifestyle.

 [DOWNLOAD PDF VERSION OF THE FEATURES AND FINISHES](#)

VODA FEATURES: QUINTESSENTIAL VANCOUVER LIVING

Voda is a contemporary 16-storey tower complemented by a seven-storey brick, concrete and corrugated metal podium. Playful light box elements randomly placed along the north and east facades create a soft glow and mimic porch light beacons. Extensive green space connects Voda to the surrounding neighbourhood including courtyards, park land and the seawall.

BUILDING

- Architecture by Rafii Architects Inc. in collaboration with Richard Henry Architect Inc.
- Interiors designed by BBA Design Consultants Inc.
- Energy-efficient, sustainable and liveable building design consistent with achieving LEED gold.
- Grand, double-height lobby with concierge.
- Fully equipped fitness room with cardio machines, weights and space for stretching, Pilates or yoga practice.
- Residents lounge with entertainment room and caterers' kitchen opening to an expansive eighth floor terrace with seating, BBQ, garden plots, tool shed and children's play area.
- Extensive bike parking plus Bike Hub for DIY tune-ups, and maintenance.
- Secured holding room at lobby level for added convenience on moving day.
- Secured underground parkade complete with on-site car share network and visitor parking stalls.
- Full-time resident manager.

HOMES

- Solid core entry doors with contemporary wood grain side panel.
- Smartly designed great room spaces with expansive windows.
- Year round comfort with in-suite controlled, energy efficient, fan coil airconditioning, heating and ventilation system.
- Architectural finishes include smooth-finished ceilings and flat profile baseboards throughout.
- Flat-panel interior doors with polished stainless steel lever-style handles.
- Innovative, ecologically sensitive wide plank wood-pattern resilient flooring throughout (except bathrooms).
- Flat-panel contemporary swing doors on all closets.
- Spacious balconies or terraces for relaxed outdoor living (as per plan).
- Sliding glass doors in frosted or clear finish separate dens and bedrooms and feature soft-close cushion stops and trackless bottom (as per plan).
- Generous in-suite storage rooms (as per plan).
- Stacking Whirlpool front-loading washer and dryer.
- Contemporary custom roller blinds on all exterior windows.

KITCHENS

- Contemporary white premium acrylic cabinetry with integral pulls and rich vertical-grain wood accents.
- Modern quartz countertops complemented by large format glazed ceramic backsplash tile for a seamless look.
- Full-height pantry with integrated microwave (as per plan).
- Undermount stainless steel single basin sink with DXV polished chrome pull-down faucet.
- Pull-out recycling storage under kitchen sink.
- German-engineered top-of-the-line Bosch appliance package includes:
 - Paneled bottom-mount 30" refrigerator to blend seamlessly with surrounding cabinetry.*
 - Ultra-quiet, fully-integrated and paneled dishwasher in 18" or 24" width (as per plan).
 - Touch control electric cooktop in black ceramic and glass.
 - Flush installed, stainless steel wall oven with genuine European convection.*Some kitchens feature paneled bottom-mount 24" Blomberg refrigerator (as per plan).
- Low profile overhead Faber hood fan.
- Stainless steel integrated Panasonic microwave.

BATHROOM

- Floating vanity with horizontal-grain wood veneer cabinet drawers and contrasting white gable.
- White quartz countertops and backsplash with square undermount sink and DXV polished chrome single lever faucet.
- Wood veneer medicine cabinet with generous shelving behind mirrored doors features open shelf below and integrated recessed lighting above.
- Large format, 12" x 24" porcelain floor tile.
- White glazed, 12" x 20", ceramic tile tub and shower surrounds.
- Frameless glass doors on 5' showers in main bath or ensuite (as per plan).
- Second bathrooms feature combination 5' soaker tub and shower (as per plan).
- Polished chrome accessories including robe hook, towel bar and paper holder.
- Solid core flat panel doors for added privacy.

SUSTAINABILITY

- Designed to LEED® Gold standards and registered with the Canada Green Building Council.
- Situated in a pedestrian and cycle-friendly location with easy access to public transit and car sharing networks.
- Part of the Southeast False Creek Neighbourhood Energy Utility.
- Extensive landscaping includes courtyards, gardens and green roof systems.
- Engineered with systems for capturing and treating storm water.
- Designated electric vehicle charging stations, parking for three car share vehicles and plenty of bicycle parking.
- Smart sorting lounge for easy on-site composting and recycling.
- High performance, double glazed, low E thermal windows.
- Energy efficient, motion-controlled lighting throughout building common areas.
- In-suite, individually controlled programmable thermostat
- Individually controlled programmable air conditioning.
- Low VOC paint used in suites and throughout common areas.

SECURITY & CONVENIENCE

- Lobby concierge and full-time resident manager.
- Encrypted security key fob building access system.
- In-suite TV monitored entry system.
- Restricted floor access via two high-speed computerized elevators.
- Exterior power outlets on balconies and terraces (as per plan).
- Wired for advanced telecommunications requirements and instant accessibility.
- State-of-the-art fire protection with centrally monitored in-suite sprinklers and smoke detectors.

CONCERT'S "COMMITMENT TO YOU" WARRANTY

Built-in assurance for you and your home is guaranteed.

- 10-year structural coverage.
- 6-year water penetration coverage.
- Two full years coverage on workmanship and materials.
- Backed and matched by Travelers Guarantee, BC's leading government-approved new-home warranty provider.





CONCERT'S PROMISE

We create exceptional homes and vibrant communities. The Creek is a shining example of our commitment to excellence in design, construction and customer service.

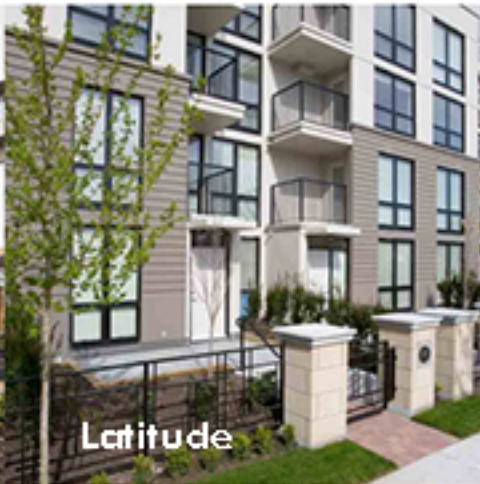
Founded in BC in 1989, Concert is an award-winning real estate enterprise and one of the country's most respected developers. Backed by the strength of pension funds representing more than 200,000 Canadians, Concert is nationally recognized for our unwavering commitment to building strong and sustainable communities. Committed to integrity, honesty and sustainability in all that we do, we are "a developer with a difference."



Patina



Tapestry



Latitude



Stonecliff



Era



Tropez



365 Waterfront



Alvar



Chelsea



Oscar



The Berazzy
Toronto



Salt

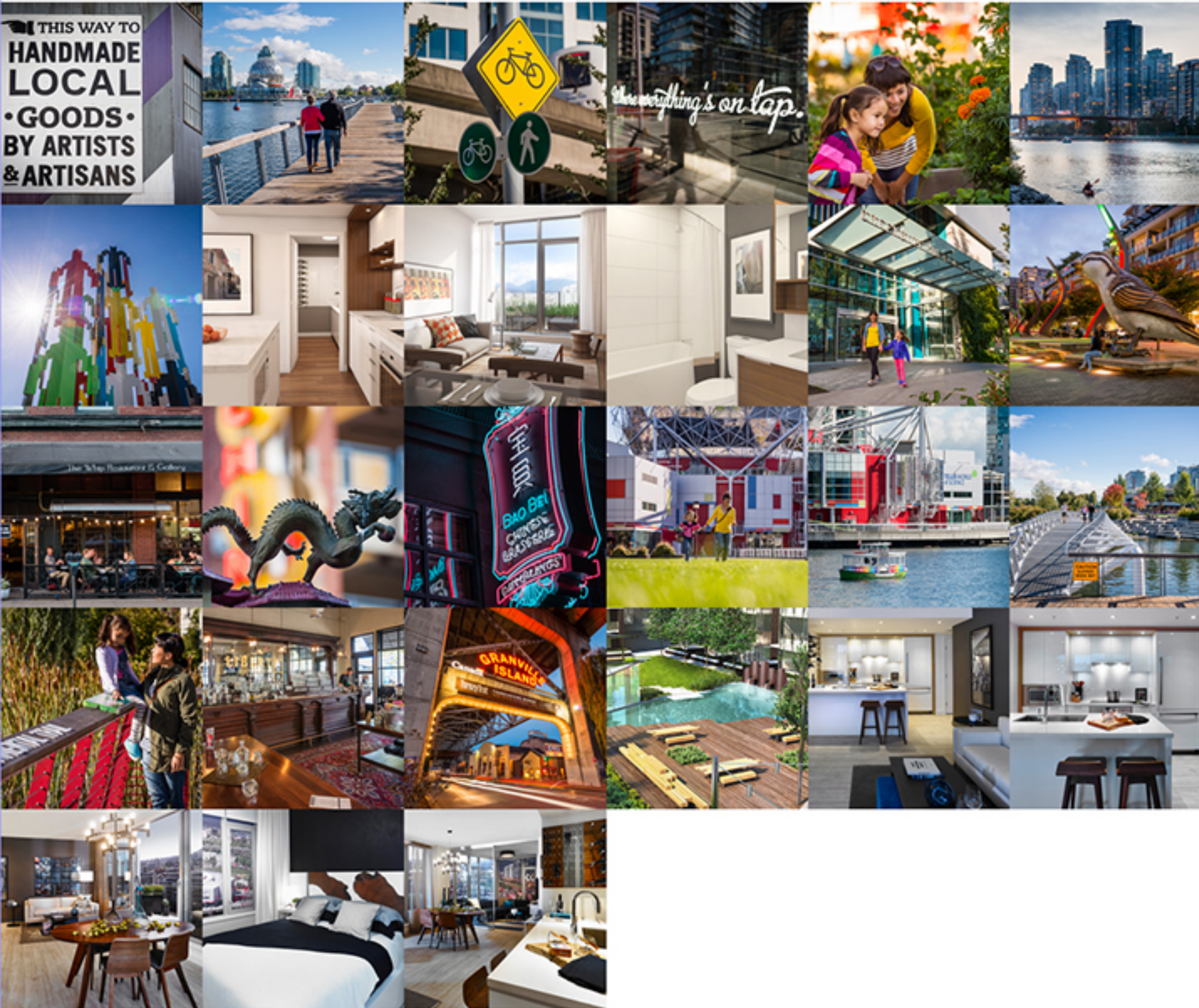


GALLERY

Check out our still images and video footage capturing this active neighbourhood's people and places. From dragonboats and kayaks to passenger ferries crossing False Creek. From cyclists to inline skaters travelling the seawall. This waterfront community is celebrated around the world. Let us give you a local's view of the shops, bars, cafes and pastimes that make it Vancouver.

Images

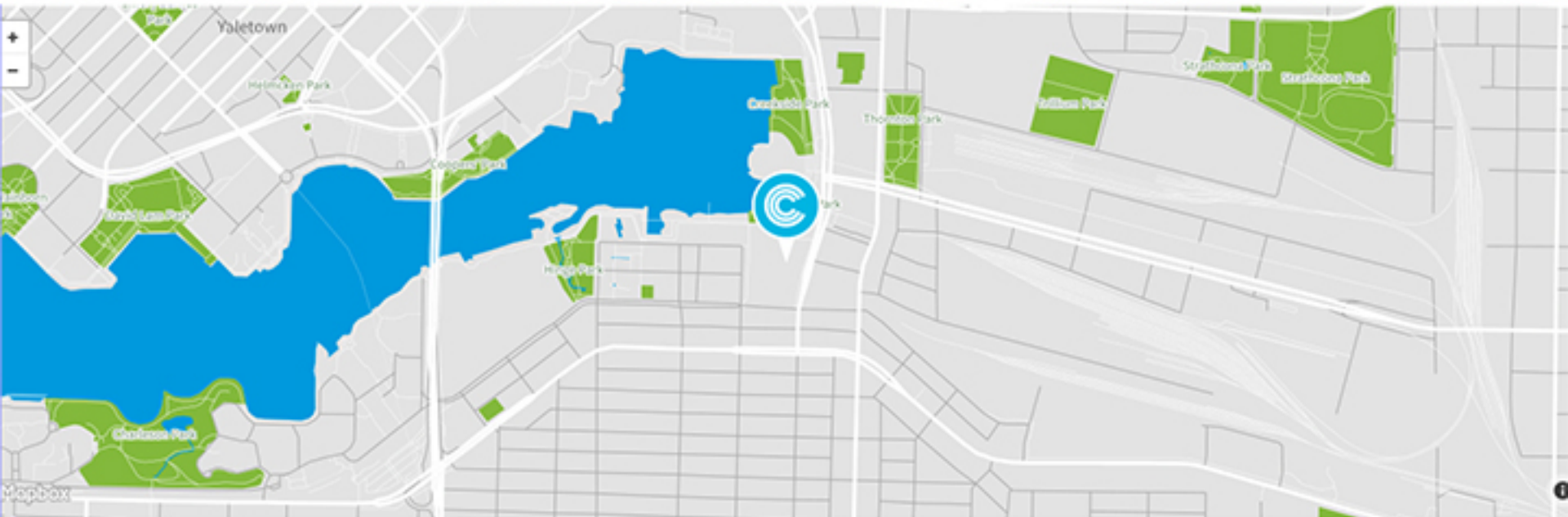
All images





VODA IS WHERE THE CREEK MAKES ITS DEBUT

SEE MORE OF THE VODA STORY



SALES CENTER

1551 Quebec St.
Vancouver, BC
604.681.8282

TheCreek@ConcertProperties.com

HOURS

Open Daily (Except Fridays)
Noon to 6 pm

*Please Note: Vehicle access to Sales Center via south bound traffic land only.

